

# Multi Purpose Sound System - digitally powered **TSM 8 dp**



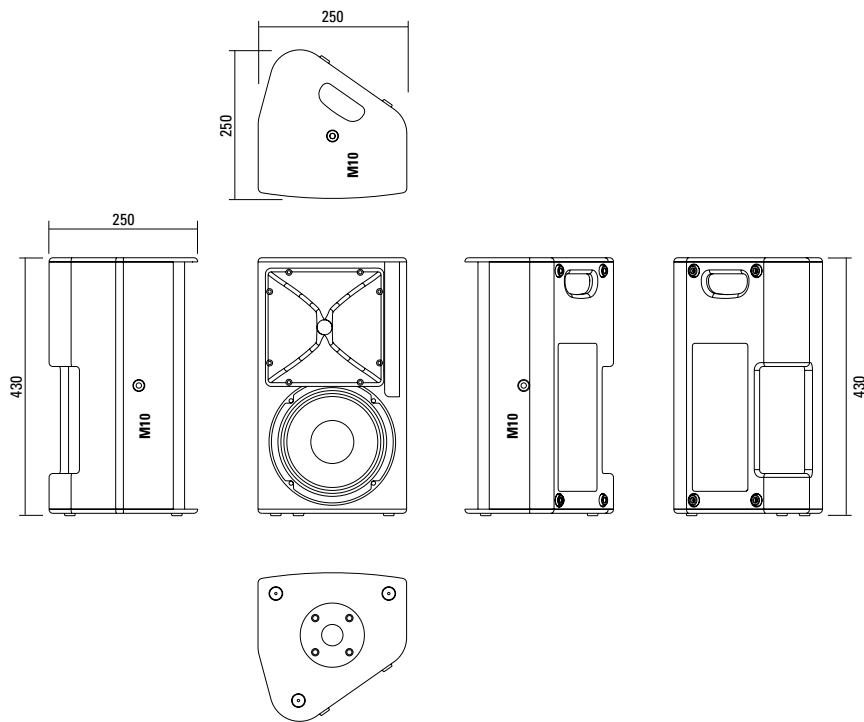
Multifunctional and compact speaker system for high quality speech and music transmission over short to medium distances. State of the art high performance components combined with the practical enclosure design and the extensive range of accessories make the TSM 8 suitable for a wide variety of demanding applications. With an integrated digital amplifier providing 500 / 150 Watt AES of power an DSP control. A range of factory-configured presets and volume settings can be selected.

## PRODUCT SPECIFICATIONS

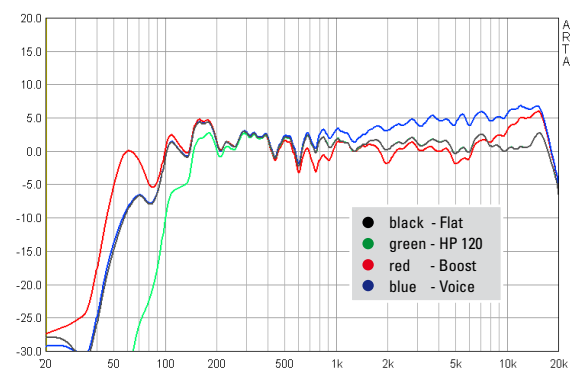
<b>Speaker Components</b>	8" Nd / 1"
<b>Description</b>	Multi Purpose Sound System
<b>Amp Power</b>	LF: 500 W AES / 110-230 V HF: 150 W AES / 110-230 V
<b>Rated Current</b>	0,5 A @ 230 V
<b>SPL</b> <small>Peak @ 1 m</small>	125 dB
<b>Max. Input Signal</b>	25 dBu
<b>DSP</b>	HDLM FPGA Processing 32 bit floating point
<b>AD / DA</b>	24 bit / 96 kHz
<b>Latency</b>	0,8 ms (analog in to analog out)
<b>Usable Range</b>	70 Hz - 19 kHz (-6 dB)
<b>Tuning Frequency</b> <small>excursion minimum</small>	80 Hz
<b>X - Overpoint</b> <small>acoustical</small>	Depends on preset
<b>Coverage</b> <small>horizontal / vertical</small>	90° x 60° - rotatable
<b>Connectors</b>	Neutrik XLR in/out Neutrik PowerCon in/out
<b>Handles</b>	1 x
<b>Rigging / Fittings</b>	3 x M10 35 mm pole mount
<b>Weight</b>	9 kg
<b>Size</b> <small>height x width x depth</small>	43,0 x 25,0 x 25,0 cm
<b>Order No.</b>	<b>00968/dp</b>



## DIMENSIONS

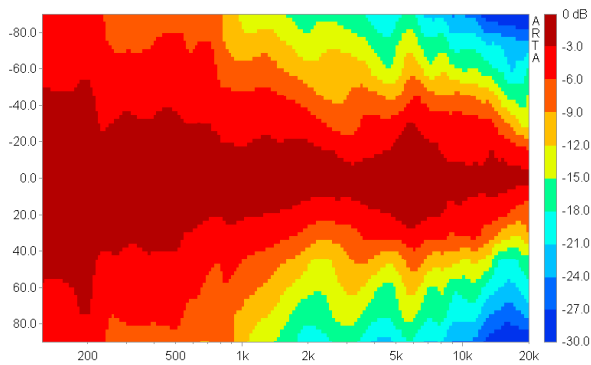


## Presets - Frequency Response

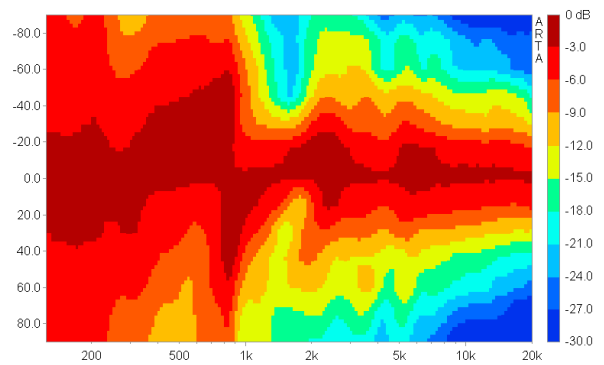


## COVERAGE PATTERNS

### 2D Directivity Plot - horizontal



### 2D Directivity Plot - vertical



**The TSM 8 dp features integrated digital amplifier electronics with a DSP controller. Various factory-configured presets and volume settings can be selected.**

High-grade electronic components from the industrial sector

and a first-class circuit design ensure excellent audio quality with low distortion and a minimal noise floor.

Highly efficient and "intelligent" limiter systems ensure optimum protection against overload, without restricting the possibilities offered by this high-performance sound system.

#### Level

Adjustment in 3 dB steps (-6 dB to +3 dB).

#### Status

##### Mute LED

Red light when the system is muted or under technically critical conditions.

##### Limit LED

Yellow light when the limiter is restricting the level.

##### Signal LED

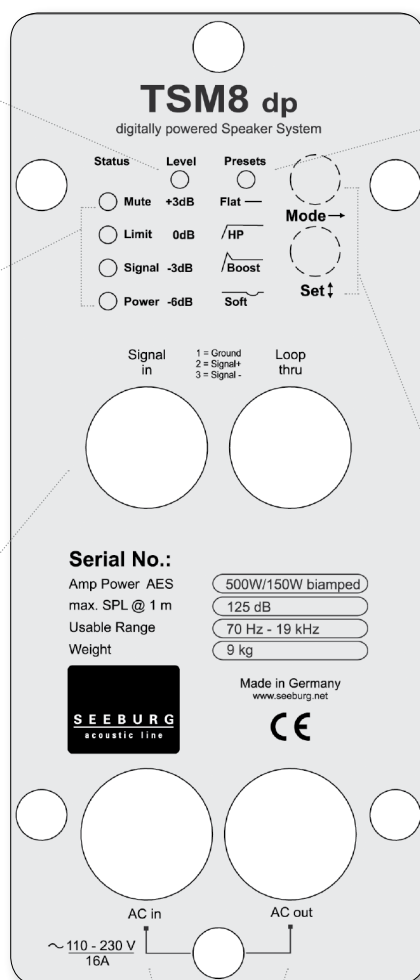
Green light when the input signal exceeds -20 dBu.

##### Power LED

Green light when the system is switched on.

#### XLR

Symmetrical analog input, max. Input +25 dBu. Effective filter protection against HF interference and DC Voltages. Virtual ground lift.



#### Presets

##### Flat

This setting provides a linear frequency response with a neutral sound characteristics. Standard setting for many applications.

##### HP

Switches in a high pass filter for use in combination with a subwoofer.

##### Boost

The same neutral response as the „Flat“ setting, but with the addition of a bass boost.

##### Soft

Reduces the level in the frequency range from 2.5 - 5 kHz, to which the ear is particularly sensitive. This setting is recommended for high level reproduction of highly compressed music tracks.

#### Mode - key

Switches between control modes Status, Level and Presets.

#### Set - key

Setting of various values and Mute on / off.

#### PowerCon (blue)

Power supply  
~ 110-230 V / 16 A max.

#### PowerCon (grey)

~ 110-230 V / 16 A max.  
loop through connector

### Flying Bracket



for TSM 8 / TS Mini  
incl. screws  
(per unit: 2 pcs. M10 x 20 ergostyle  
lobe knob and rubber washers)  
Order No. **01213/set**

### Flying Bracket



for TSM 8  
horizontal alignment, incl. screws  
(per unit: 2 pcs. M10 x 20 socket head  
screws, spring- and rubber washers)  
Order No. **01213/H/set**

### Ergostyle Lobe Knob



for flying brackets,  
M10 x 20, with grip, adjustable  
Order No. **08171**

### Rubber Washer



for flying brackets,  
40 mm  
Order No. **01205**

### Flange



35 mm Ø → M10,  
Order No. **08126**

### Flange



with ball and socket joint,  
with additional locking screw,  
M10 x 15, max. load 15 kg  
Order No. **08125**

### Truss Clamp



incl. M10 Adapter,  
max. load 15 kg  
Order No. **01221**

### Doughty Quick Trigger Clamp



max. load 250 kg  
Order No. **01223/250 kg**

### Ring Screw



M10– DIN 580  
Order No. **73700**

### TV Spigot



10 mm internal thread,  
28 mm Ø  
Order No. **08128**

### Steel Safety



4 mm x 600 mm, black,  
max. load 10 kg (BGI 810-3),  
quick connector undetachably  
Order No. **01376/4**

### Chain Fastener



VBS 7 mm  
Order No. **01378**



## ACCESSORIES TSM 8 dp

### Wall Mount



for U-brackets, max. load 40 kg,  
incl. screws  
(M10 x 70 mm socket head screw,  
M10 hex lock nut and flat washer)  
for 8"-12" speakers  
Order No. **08130/F/269**

### Wall Mount



with tilt unit, max. load 40 kg  
Order No. **08130**

### Wall Mount



M10, max. load 15 kg, with stargrip  
Order No. **08131**  
Order No. **08131/w** (white)  
  
for permanent installation,  
incl. tilt angle stop  
Order No. **08131/F**  
Order No. **08131/F/w** (white)

### Speaker Stand



Incl. wind up, max. load 50 kg,  
height 129 to 204 cm, K&M  
Order No. **03011**  
  
50 kg max., K&M  
Order No. **03010**

### Bag



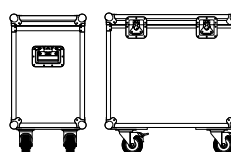
for 2 x TSM 8, padded  
with pocket for accessories  
Order No. **01245**

### Rain Cover



for TSM 8 / TSM 8 dp  
Order No. **01245/outdoor**

### Flight Case Trunk



for 2 pcs. TSM 8,  
standard, 7 mm birch multiplex,  
PVC coated, hinged lid, 2 x recessed  
sprung handles, 2 x butterfly catches,  
4 x 100 mm blue wheels, 2 pcs. with  
brake, interior lined with felt.  
Order No. **16058**

### Hybrid Cable System



PowerCon-PowerCon / XLR-XLR  
  
2,5 m      Order No. **08462**  
5 m        Order No. **08464**  
10 m      Order No. **08466**  
15 m      Order No. **08468**